

**PIRTON SCHOOL
WELCOME TO SWIFTS**

Year 2 and 3

STAFFING

Miss McDonald- Monday, Tuesday AM, Thursday and Friday

Miss Allen- Tuesday PM and Wednesday

Mrs Allen, Mrs McGivney and Mrs Manson- Teaching Assistants

ABOUT THE SWIFTS TEAM

- Consistent
- Experienced
- Supportive
- Adaptable
- Committed

	Registration 8:40- 8:50 Morning task	9:15-10:15	Break 10:15- 10:35	10:35- 11:00	11:00-12:00	Lunch 12:00- 12:55	12:55-1:20	1:20-2:10	2:10- 3:05 Home time 3:15	
Monday	Assembly- JM 9- 9:15	English		Phonics/ Spelling	Maths		Guided Reading	Science	PSHE	Reading
Tuesday	Class presentations	English		Guided Reading	Maths		Phonics/ Spelling	Computing	Music	Reading
Wednesday	Assembly- SM 9- 9:15	English		Phonics/ Spelling	Maths		Handwriting	History/ Geography	RE	Reading
Thursday	Assembly- Music/ spiritual 9- 9:15	English		Phonics/ Spelling	Maths		Guided Reading	Art/ DT	PE	Reading
Friday	Celebration Assembly 9- 9:15	English		Phonics/ Spelling	Maths		PE (Rising Stars)		French Enrichment	Reading

OUR CURRENT TIMETABLE

CURRICULUM – THE EXCITING BIT!

Main theme		History		Geography		History		
Swifts (Y2/3)	Driver project		Movers and Shakers		Coastline		Magnificent Monarchs	
	Subject-specific projects	Geog	Let's explore the world		Covered in main project		Geography revision and retrieval practice	
		Science	Human survival	Habitats	Uses of materials	Plant survival	Animal survival	
		Art	Mix it	Still life	Flower Head		Portraits and poses	
		DT	Remarkable recipes		Beach hut		Cut, Stitch and Join	Push and Pull

Autumn Term 2024

Monday 2 nd September 2024	INSET – School closed to pupils
Tuesday 3 rd September 2024	Term starts
Friday 25 th October 2024	Term ends at 3.15pm (usual time)
Monday 28 th October - Friday 1 st November 2024	Half term holiday
Friday 29 th November 2024	Occasional Day - School closed to pupils
Friday 20 th December 2024	Term ends at 1.30pm

Spring Term 2025

Monday 6 th January 2025	INSET – School closed to pupils
Tuesday 7 th January 2025	Term starts
Friday 14 th February 2025	Term ends at 3.15pm (usual time)
Monday 17 th - Friday 21 st February 2025	Half term holiday
Friday 4 th April 2025	Term ends at 1.30pm

Summer Term 2025

Tuesday 22 nd April 2025	INSET – School closed to pupils
Wednesday 23 rd April 2025	Term starts
Monday 5 th May 2025	Bank holiday
Friday 23 rd May 2025	Term ends at 3.15pm (usual time)
Monday 26 th - Friday 30 th May 2025	Half term holiday
Monday 21 st July 2025	Term ends at 1.30pm
Tuesday 22 nd July 2025	INSET – School closed to pupils
Wednesday 23 rd July 2025	INSET – School closed to pupils

TERM DATES

ATTENDANCE MATTERS!

Whilst children are unwell from time to time, we ask that you avoid other absences, especially for day trips and holidays. We urge you NOT to take your child out of school for holidays; these absences are always unauthorized and could result in a fixed penalty notice being issued for non-attendance. **The minimum expectation for attendance is 95%**, anything below this level is considered a concern. Thank you for your cooperation.

0 days absence	190 days in school	100% attendance
10 days absence	180 days in school	95% attendance
19 days absence	171 days in school	90% attendance
29 days absence	161 days in school	85% attendance
38 days absence	152 days in school	80% attendance
47 days absence	143 days in school	75% attendance

Attendance	Days absence	Weeks absence	Hours missed
95%	9 days	2 weeks	59 hours
90%	19 days	4 weeks	124 hours
85%	29 days	6 weeks	189 hours
80%	38 days	8 weeks	247 hours
75%	48 days	10 weeks	312 hours
70%	57 days	11.5 weeks	371 hours
65%	67 days	13.5 weeks	436 hours

UNIFORM

Long hair needs to be tied back and no extreme haircuts. Hair bands and scrunchies should be simple and in the school colours.

Stud earrings can be worn, but these need to be removed on PE days.

Black shoes or plain black trainers with no logos or colour. These must be entirely black. Boots are not allowed.

All children will need a pair of trainers for outside PE.

PE KITS

Children's indoor and outdoor PE kits need to be school each day. Our PE days are Thursday and Friday currently.

Watches/ earrings need to be removed.

Indoor PE lessons

A blue PE t-shirt with house colour/a sky blue t shirt (this needs to be a change of top)

Blue/black shorts

Outdoor PE lessons

A blue PE t-shirt with house colour

Blue/black shorts or jogging bottoms (no leggings)

A navy blue jumper or fleece

Trainers

HOME LEARNING

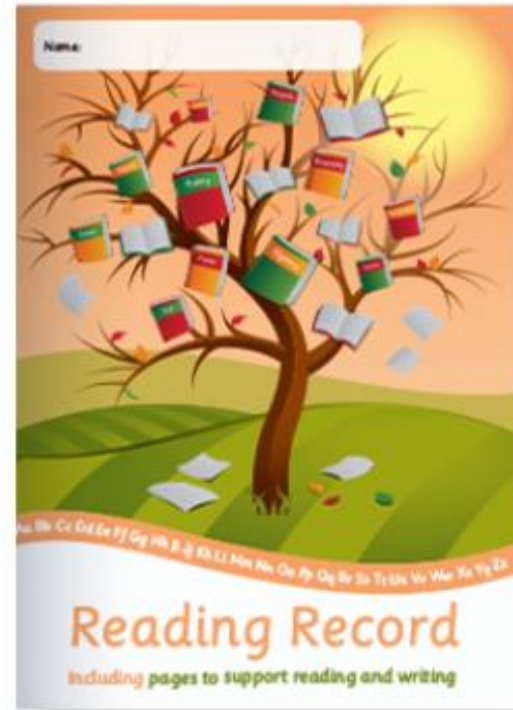
	Reception	Year One	Year Two	Year Three	Year Four	Year Five	Year Six
Reading	Reading ideally daily and at least four times a week (see Reading Policy with Parent Partnership for further details)						
						Reading skills worksheet including comprehension	
Speaking and Listening	Over the school year, each child will be asked to give a presentation to their peers. These will start after October half term. These presentations will be shared in a weekly assembly to the child's class. In the first half term we will model and teach the skills to support children to prepare these presentations. The audience will be expected to listen and ask relevant questions.						
Maths	Practical Maths activity linked to learning in class (large scrapbook provided for informal recording)	Maths activity linked to learning in class eg. number bonds/number investigations (large scrapbook provided for informal recording)	Maths activity linked to learning in class eg. number bonds/number investigations	Times Tables Rock Stars ideally daily and at least three times per week			
				Maths worksheet	Reasoning style questions worksheet		
Phonics/Spelling	Phonics/Spelling Game linked to learning in class (large scrapbook provided for informal recording)	Phonics/Spelling Activity linked to learning in class (large scrapbook provided for informal recording)	Spellings to be practised and tested linked to a spelling/ phonics pattern that has been taught.	Spellings to be practised linked to a taught spelling unit and tested.			
				Differentiated Spelling, Punctuation and Grammar worksheet			

READING – PARENT PARTNERSHIP

1. Build reading into your child's daily routine: read every day.
2. Be a great reading partner with your child!
3. Bring books everywhere.
4. Be enthusiastic!
5. Use technology together.



Year Two



Year Three

READING RECORDS

GUIDANCE FOR READING RECORDS

We ask that parents to make at least three entries a week, however we encourage children to read daily at home.

In addition, we encourage other books and texts to be read to and by children for example books at home, comics, recipes, leaflets, poems.

Children receive a phonetically decodable reading book linked to the Bug Club Phonics stage they are working at.

GUIDANCE FOR READING RECORDS

Recording comments in the reading record

We ask that all adults, at school or at home, include the name of the text and the pages that were read.

Adults in school will always write in green pen.

Filling in the word boxes at the bottom of the pages will greatly support your child's reading development. These consist of:

- New sounds I have spotted (e.g. night rain)
- Tricky words, or words to practise
- Tricky words or new words I have learned

TYPES OF READING COMMENTS

- Jack read this book without any support.
- Jack read this book/page with expression and meaning.
- We talked about the meaning of the word _____.
- Jack could blend all of the words on pages 1-6 .

COMMUNICATION

For the Autumn Term, an adult will be on the playground each morning to collect any messages. The planned pattern is:

Mondays – Mrs Magdeburg

Tuesdays – Mrs Hall

Wednesdays – Mrs Magdeburg

Thursdays – Mrs Hulme

Fridays – Mrs Bailey

Alternatively, an email can be sent to the office admin@pirton.herts.sch.uk account, or a conversation can be held after school.

WEBSITE



Letters



Home Learning Presentations



Curriculum information



Key information



Blog

HOW YOU CAN HELP

Encourage your child to tell you one thing they have learnt each day.

Encourage your child to respond to questions in conversation in full sentences.

Support your child in identifying and editing number and letter reversals and the correct formation.

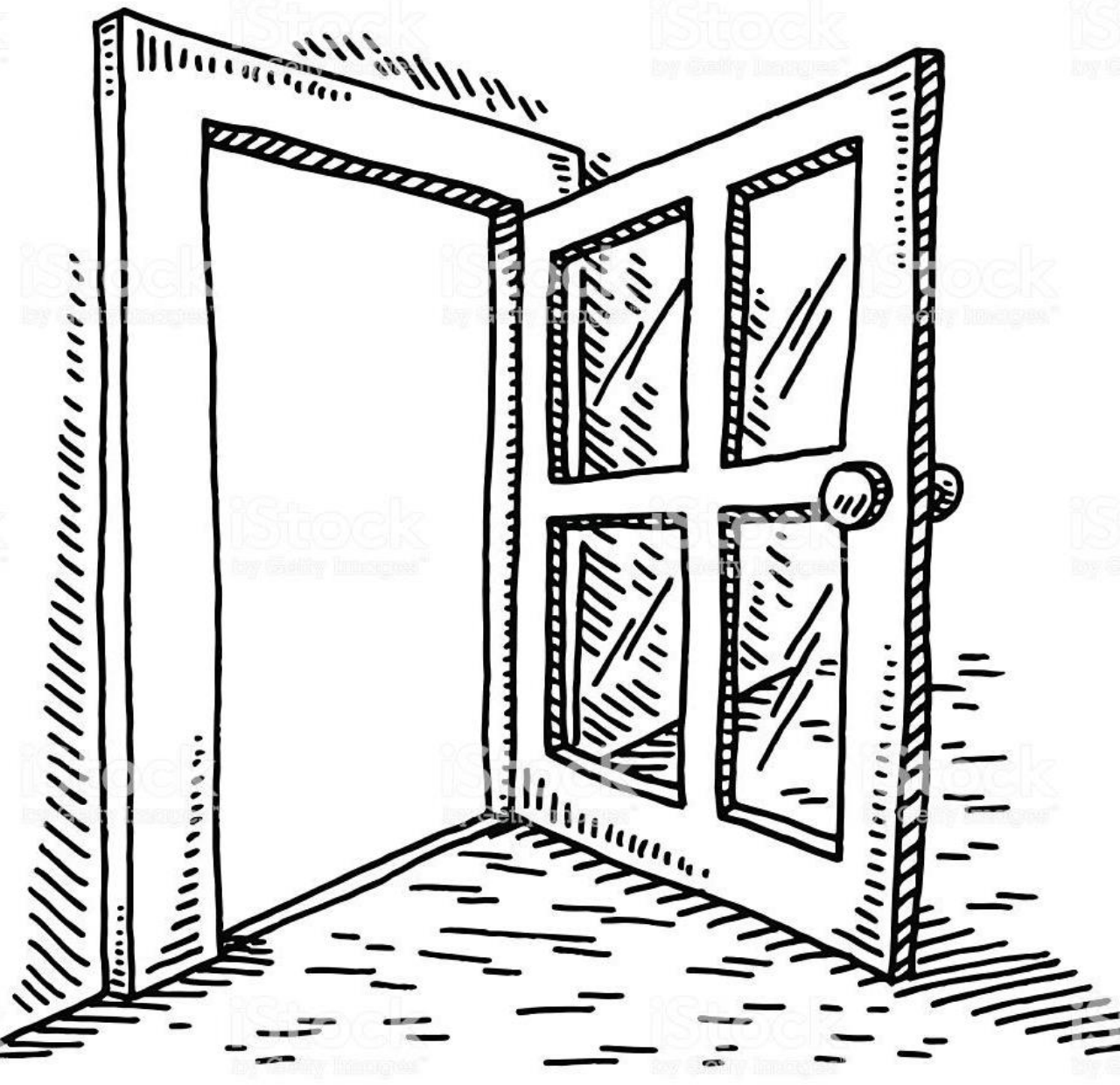
Encourage your child to talk to a trusted adult in school if they have an issue.

READ, READ, READ!

Support and extend any set home-learning.

Explain and model the use of any new vocabulary.





OPEN DOOR COMMUNICATION

QUESTIONS?

Thank you for joining us today.